


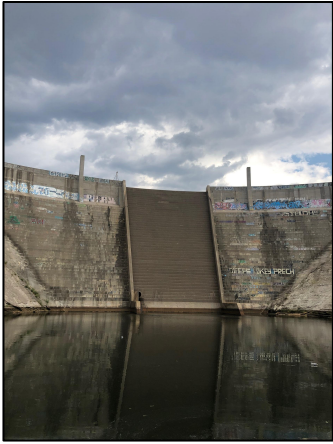


Jemez Mountains Electric
Cooperative, Inc.

Your Touchstone Energy® Cooperative 

La Luz

JMEC Newsletter September 2020



Pictured L/R: Dominic Martinez, SCID Sec./Treas.; Ron Gallegos, SCID VP; Laura Rendón, JMEC Exec. Asst.; Charlie Trujillo, JMEC Trustee District 5; Kenny Salazar SCID President; Leo Marquez, JMEC Board Chair; Darryl Leyba JMEC Supervisor; John Tapia, JMEC Trustee At-Large.

JMEC Board of Trustees Supports Santa Cruz Irrigation District Upgrade Project to Santa Cruz Reservoir Dam

The Board of Trustees is proud to announce its committed support of the Santa Cruz Irrigation District (SCID) dam and irrigation improvement project. We have committed to supporting the SCID's project to upgrade and improve the Santa Cruz Dam infrastructure and capabilities. The Santa Cruz Irrigation District, headed by Board President Kenny Salazar of La Mesilla, acquired approximately \$110,000 dollars in capital outlay from the State of New Mexico for much needed and long overdue capital improvements to the Santa Cruz Dam. President Salazar, accompanied by Vice President Ron Gallegos and Secretary/Treasurer Dominic Martinez, recently toured the dam with members of the Board of Trustees.

The capital improvement funds will be used for a three phase line upgrade, dam wall infrastructure improvements, and control center upgrades. JMEC has committed to supporting this project with improvements to the dam's power supply and fiber optic capabilities. Collectively, this effort will upgrade a 100+ year old control system and infrastructure that serves 2400 Parciantes in the Española Valley.

The Santa Cruz Irrigation District is charged with maintaining the Dam and the water flow. Water from the reservoir when released is utilized by the 2400 Parciantes in the Valley for historical irrigation uses. SCID manages the water flow to assure that the Valley users are able to access their share of safe to use and reliable water. SCID has maintained this duty under New Mexico State statutes and in partnership with the Bureau of Land Management and the State Engineer.

"The upgrades are crucial for the District to be able to serve the people and their water use in the Valley," stated Kenny Salazar, President of the SCID since 2003. "We talked to our State Representatives about the need for these funds and we were able to get the money in the 2018 and 2019 sessions." Salazar and the SCID Board Officers applaud the efforts and support of Rep. Joseph Sanchez and Rep. Susan Herrera for the capital outlay funding.

JMEC will play a key role in the project with upgrades and enhancements of the power supply to the Dam. With the control center physically housed inside the Dam, upgrading the one phase line control to a three phase line will be enhanced with WiFi capabilities through the fiber optic lines owned by the Co-op. "I want to be sure to recognize the JMEC Board of Trustees for their participation and partnership with us," stated Dominic Martinez, SCID Board Secretary/Treasurer. "When we contacted board members John Tapia and Leo Marquez a couple weeks ago, they came through and put us on the agenda and fully supported us and our community."

Construction is slated to start in the coming weeks and JMEC has already conducted an assessment for power supply improvements.

A Message From The Board

Dear Consumers,

In this month's newsletter we hope you will enjoy a preview to the grand opening of our new JMEC building and facilities at headquarters in Española. We are excited to share with you "The Plaque" that will be dedicated to the new building that was commissioned to George Rivera of Pojoaque Pueblo.

The Board is also excited to announce the partnership with the Santa Cruz Irrigation District (SCID). We are committed to assisting the SCID project for dam infrastructure improvements.

The Solar Loan Program has been temporarily placed on hold. We are finalizing the details of this program and want to assure that the program best serves our consumers. Please check our website for updates and contact information.

On behalf of the Board of Trustees, I want to thank you for your support and wish you all wellness and good health.

Sincerely,

Leo Marquez, President
JMEC Board of Trustees

REPORT An Outage 24 HOURS A DAY! Automated OMS (Outage Management System) will track everyone that is out to make sure everyone has power restored. You can report and track the outage three ways:


1. Call the outage hotline at - 1-877-753-0095
2. Online Customer Portal - <https://billing.jemezcoop.org/oscp/>
3. JMEC Mobile App.



Electric Cooperative, Inc.



**Jemez Mountains Electric
Cooperative, Inc.**

Your Touchstone Energy® Cooperative 

Board of Directors

Leo R. Marquez II - District No. 6, President
Harold C. Trujillo - District No. 5, Vice-President
Nick R. Naranjo - District No. 5, Secretary
Johnny Jaramillo - District No. 3, Treasurer
John Tapia - Trustee-At-Large, Asst. Secretary-Treasurer

Lucas Cordova, Jr. - District No. 4
John Ramon Vigil - District No. 4
Bruce Duran - District No. 6
Dennis Trujillo - District No. 1
Stanley Crawford - District 5
Dolores G. McCoy - District 2

Ernesto A. Gonzales, General Manager

JEMEZ ELECTRIC COOPERATIVE BUILDING PLAQUE



This beautiful plaque, commissioned by the JMEC Board of Trustees to local pueblo artisan George Rivera of Pojoaque Pueblo, will be one of the hallmarks of the new Jemez Mountains Electric Cooperative headquarters.

The new JMEC building will soon open its doors to replace the current building that was established in 1961. The new office building will be a state of the art facility that will feature updated technology capabilities, a safer work environment for employees, eco-friendly capabilities, and improved capacity to better serve the JMEC consumers and community.

The “Jemez Mountains Electric Cooperative Building Plaque” was created by George Rivera. Recently, Rivera took the time to discuss and explain The Plaque. Rivera explained that he set out to accomplish a work of art that was truly representative of the culture, people and communities that JMEC provides services to. Rivera emphasized the Native American symbols, the JMEC mountains, and the founders of the Co-op.



George Rivera, is a member of the Pueblo of Pojoaque; a world renowned American Indian artist; former Governor of the Pueblo of Pojoaque, Husband, Father and JMEC consumer. Courtesy photo.

The Native imagery started with the lighting and rain clouds that is reflective of natural energy. Lighting, of course, is electricity. The handprints depict “Man’s energy” and that ancient “Man” had come to realize this gift and its significance of “natural Power” and how to utilize the natural power for survival and sustainability. The “Avanyu” is the sacred water serpent of the Pueblo people. Although the Avanyu can have many significant meanings to the ancient Pueblo culture, Rivera felt the symbolism was obvious for inclusion into The Plaque. In this regard, the Avanyu embodies the power of the earth, the power of water and the power of energy; thus, one can envision the raw energy and electricity that runs through the water serpent.

JMEC Consumers may recognize those mountains depicted in The Plaque. Rivera included the region’s Jemez Mountains to embody the electric services that JMEC provides to the region and consumers from Chicoma Mountain to Abiquiu and on to Cuba. Added were the mesas to provide depth and a more full depiction of the region.

Rivera further explained that as he was finalizing The Plaque, it became apparent that the outline was similar to that of the State of New Mexico’s borders. Rivera placed a finishing touch on this outline by including the southern border of New Mexico. To Rivera, he felt that this completed the piece all-around as it signifies a true cultural representation of JMEC and its consumers and the region that JMEC serves. If one looks closely into the plaque, Rivera hopes they will recognize their reflection. A reflection of who we are today and where we have come from.

Rivera used an Old English font in capital letters to exemplify the name of the plaque, JEMEZ MOUNTAINS ELECTRIC COOPERATIVE, INC. Furthermore, Rivera points out that this modern style of art reflects the Board’s initiative to modernize the headquarters of JMEC; and, aims to bring into perspective the historical context of our cultures. Rivera stated, “It was an honor to be able to create this piece of art for JMEC and my fellow members. I congratulate the Board on their success.” Rivera hopes that the community will be able to enjoy his vision of Native American culture, regional history, humanity, and this energy that transcends into the power of electricity.